



TFNSW

CONCEPT DEVELOPMENT APPLICATION AND FIRST STAGE OF DEVELOPMENT

TFNSW GLENDALE

65 Glendale Drive, Glendale

LANDSCAPE MASTERPLAN

TLA SUBMISSION

14790.5-TFNSW GLENDALE-MP_M

20 DEC 2024



CONTENTS

01

MASTERPLAN



Landscape Masterplan

Local Park

Pocket Park

Street Section

Street Section

Street Section

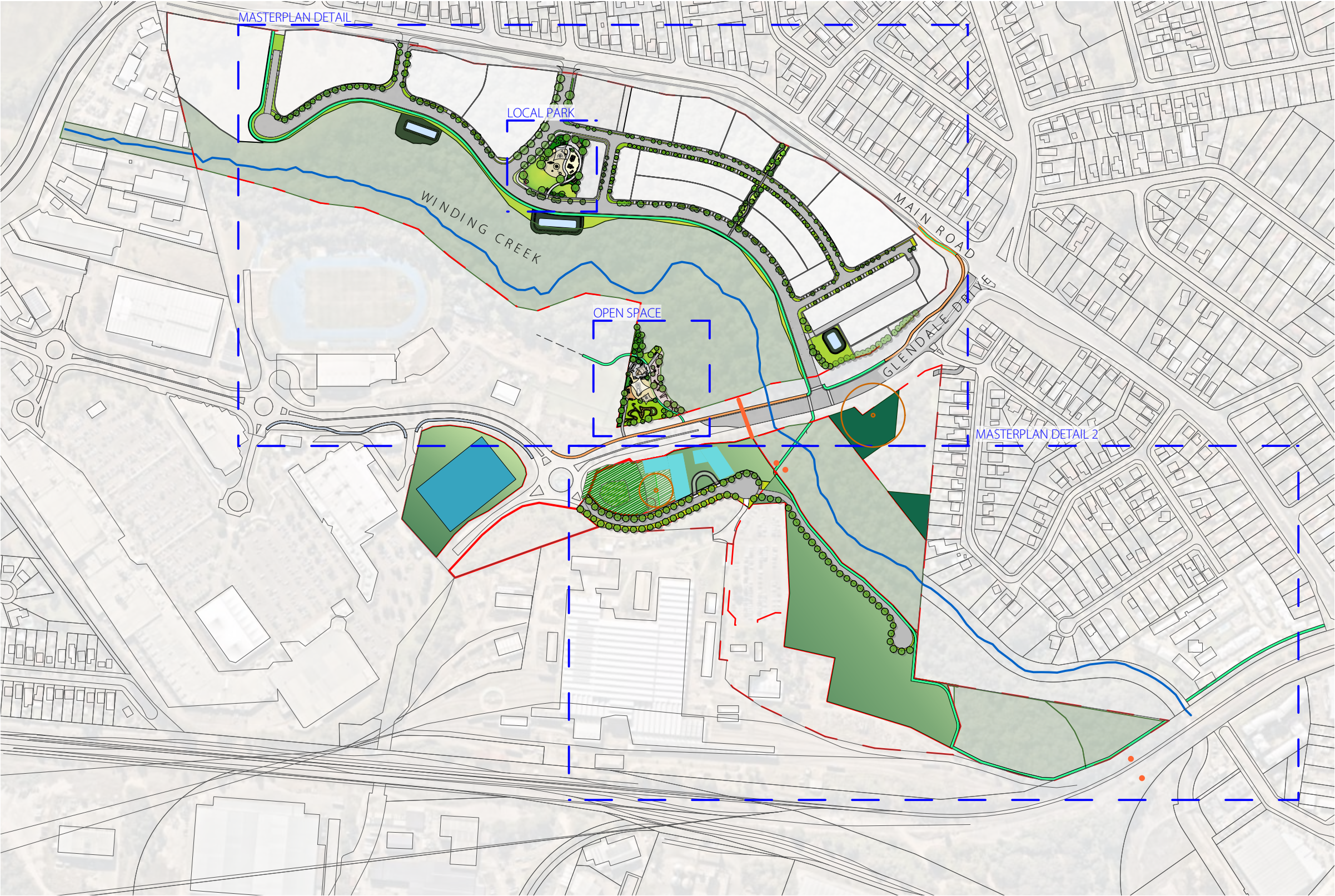
Connection to Country

Stage 1 - Phase 2 Subdivision

Acknowledgement of Country

Terras acknowledge the Traditional Custodians of the lands on which we work and live. We pay our respects to the elders, past, present and emerging and recognise their continuing connection to country and contribution to this land.

MASTERPLAN



LEGEND

- SITE BOUNDARY
- PROPOSED TREE PLANTINGS AS SPECIFIED
- TURF AREA
- MASS PLANTING
- ROAD
- 3M WIDE CYCLE PATH
- EXISTING SHAREWAY
- FOOTPATH / CONCRETE
- RE-ESTABLISHMENT OF NATIVE VEGETATION
- GLIDER POLES AND ROPE BRIDGE
- SIGNIFICANT TREES TO BE PROTECTED AND RETAINED



MASTERPLAN DETAIL



LEGEND

- SITE BOUNDARY
- PROPOSED TREE PLANTINGS AS SPECIFIED
- TURF AREA
- MASS PLANTING
- ROAD
- 3M WIDE CYCLE PATH
- EXISTING SHAREWAY
- GLIDER POLES AND ROPE BRIDGE
- SIGNIFICANT TREES TO BE PROTECTED AND RETAINED

NOTES

- Riparian corridor retained and rehabilitated as ecological stepping stone for bats and birds, protecting cultural significance of the area & providing green canopy backdrop to the proposed development.
- Main Park public open space to provide an area for passive recreation
- Pocket Park with proposed pumptrack and playground to provide community amenity adjacent to the riparian corridor
- Green link pedestrian corridor provides connectivity through the site to Winding Creek and the sharepath
- Proposed regional cycleway to improve access to openspace and connectivity to the greater area
- Existing vegetation to be retained and protected with supplementary planting of species from the associated vegetation community to provide a vegetation buffer to Main Road
- Proposed detention basin locations
- Cycleway to connect to existing cycle paths on Glendale Drive.



MASTERPLAN DETAIL 2



LEGEND

- SITE BOUNDARY
- PROPOSED TREE PLANTINGS AS SPECIFIED
- TURF AREA
- MASS PLANTING
- ROAD
- 3M WIDE CYCLE PATH
- EXISTING SHAREWAY
- FOOTPATH / CONCRETE
- RE-ESTABLISHMENT OF NATIVE VEGETATION
- GLIDER POLES AND ROPE BRIDGE
- SIGNIFICANT TREES TO BE PROTECTED AND RETAINED
- COVER CROP

NOTES

- Riparian corridor to be retained and rehabilitated to provide a continuation of the ecological stepping stone for bats and birds and protect the cultural significance of the area while providing a green canopy backdrop to the proposed development.
- Cycleway connection along riparian zone
- Existing vegetation to be protected and rehabilitated.



LOCAL PARK

LEGEND

- SITE BOUNDARY
- PROPOSED TREE PLANTINGS AS SPECIFIED
- TURF AREA
- MASS PLANTING
- FOOTPATH / CONCRETE
- SAND
- PROPOSED SIGNAGE WALL
- PROPOSED FENCE
- DECO GRANITE

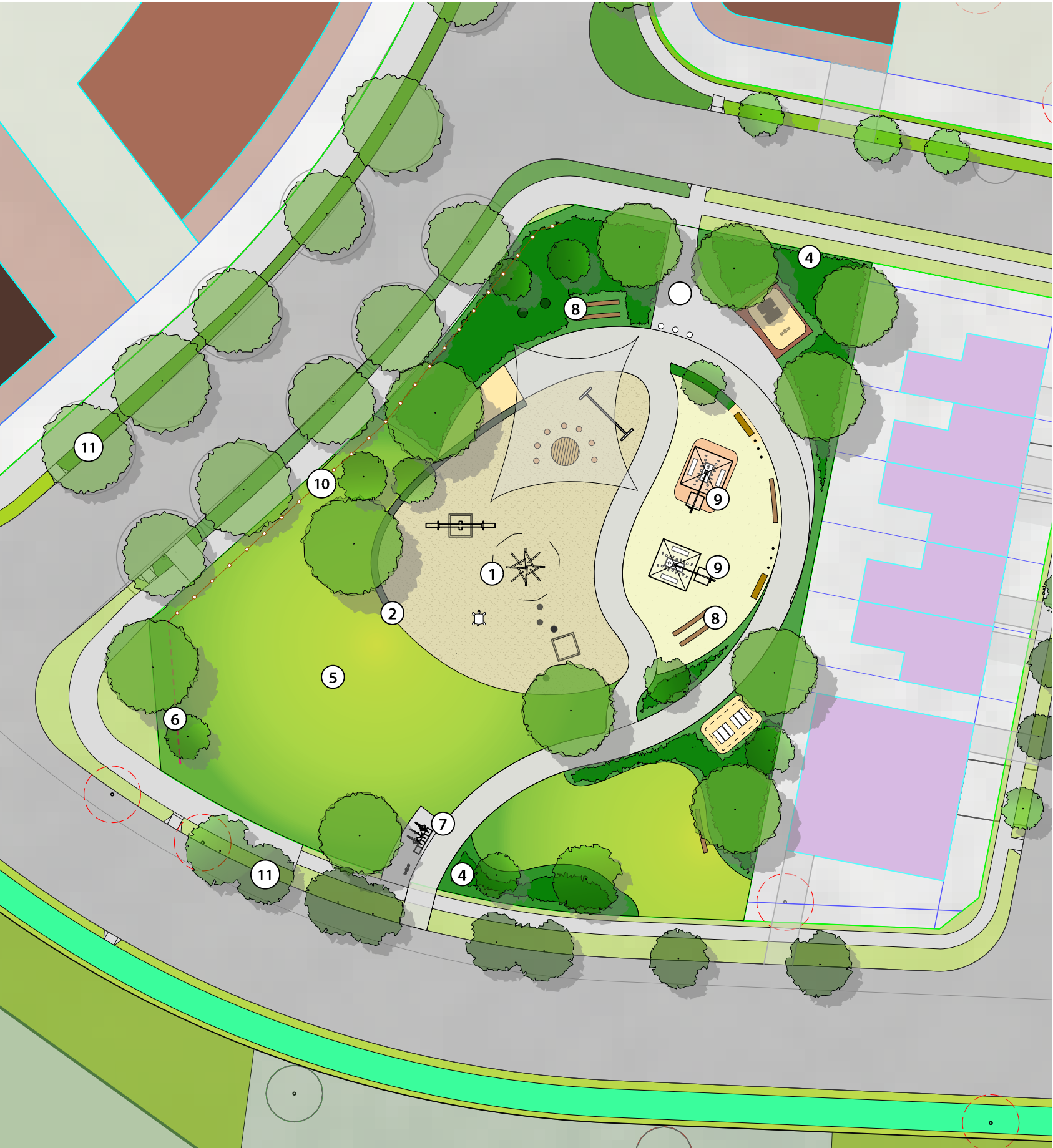
Requirements of Local Park- minimum: (LMCC, Parks and Play Strategy 2021)

- playground (often included)
- one park bench
- pathway to play equipment
- park sign
- one or 2 large trees
- slide, rocker, or climbing equip (Age range 2-8)
- one bubbler
- one bench/seat at play equipment
- bin (may provide)



NOTES

1. Nature play style climbing equipment and swings
2. Concrete seating wall
3. Connections provided through to commercial centre
4. Mass planting of low grasses and groundcovers provide vegetation buffer between park and entry road
5. Open turf area for ball games sloping north south
6. Feature wall provides signage to park.
7. Bubbler & bicycle rack at entry
8. Bench seats
9. Picnic shelter area: including bbq, picnic benches and rubbish bins
10. Indicative fencing for road safety to playground.
11. Street trees proposed



OPEN SPACE

LEGEND

- SITE BOUNDARY
- PROPOSED TREE PLANTINGS AS SPECIFIED
- TURF AREA
- MASS PLANTING
- FOOTPATH / CONCRETE
- SAND
- MULCH
- COLOURED CONCRETE

Requirements of Local Park- minimum: (LMCC, Parks and Play Strategy 2021)

- playground (often included)
- one park bench
- pathway to play equipment
- park sign
- one or 2 large trees
- slide, rocker, or climbing equip (Age range 2-8)
- one bubbler
- one bench/seat at play equipment
- bin (may provide)

Playground design indicative only.
Subject to future design development.

NOTES

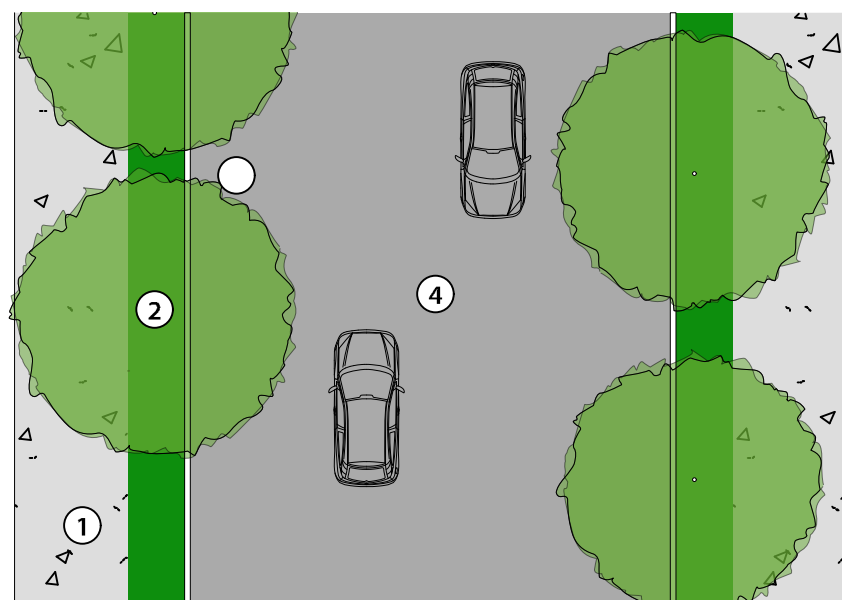
1. Main playground zone with climbing and balance focused play
2. Existing Winding Creek vegetation to be protected and retained
3. Nature play area with sand and water play
4. Nature play area with timber platform and log seating for story telling & interpretive play. Path through mass planting to provide sensory play and bush education through softworks plan.
5. Indicative pumptrack for sporting and recreation
6. Feature paving with reference to Winding Creek/Connection to Country.
7. Existing cycleway



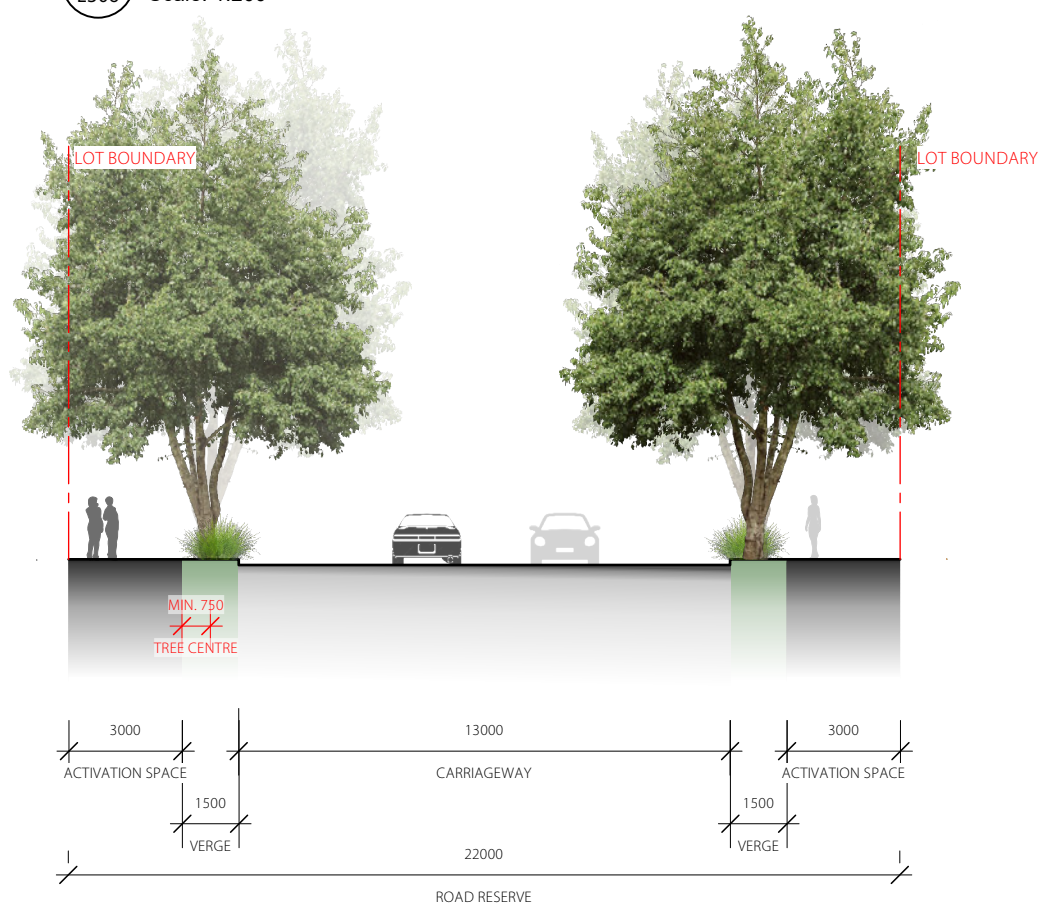
1 POCKET PARK
L305 Scale: 1:500



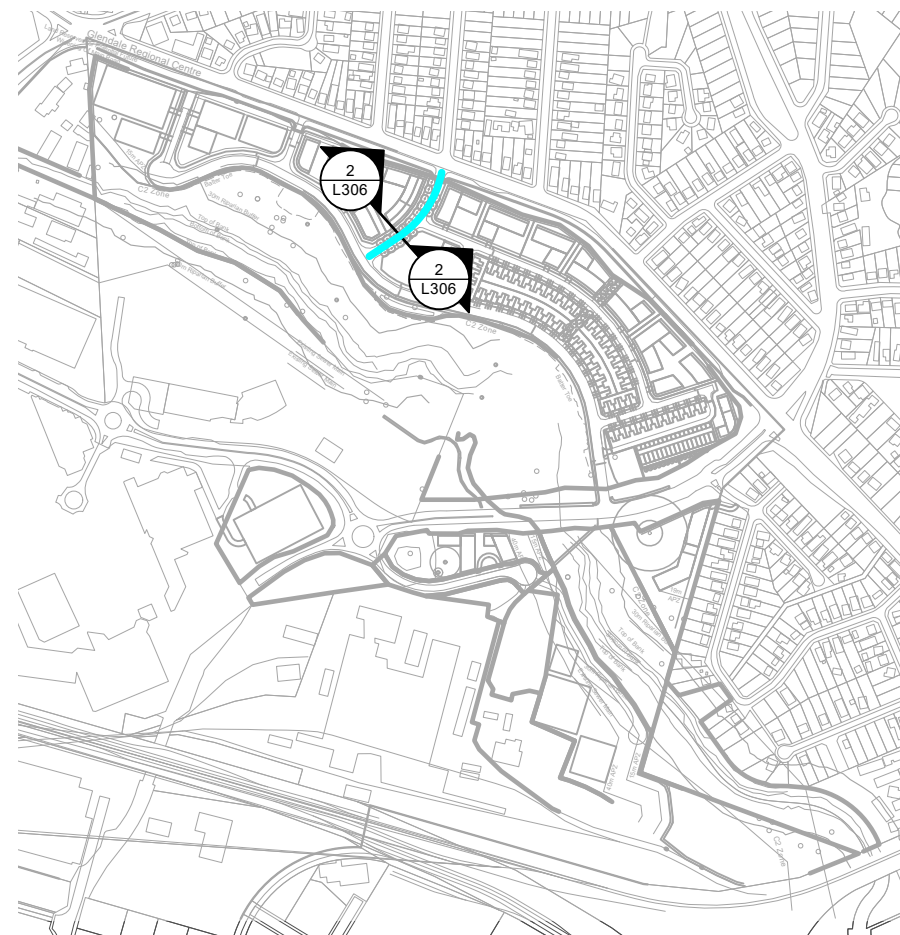
STREET SECTION - ENTRY ROAD



1 ENTRY ROAD - PLAN
L306 Scale: 1:200



2 ENTRY ROAD - SECTION
L306 Scale: 1:200



LEGEND



SITE BOUNDARY

PROPOSED TREE PLANTINGS
AS SPECIFIED

MASS PLANTING

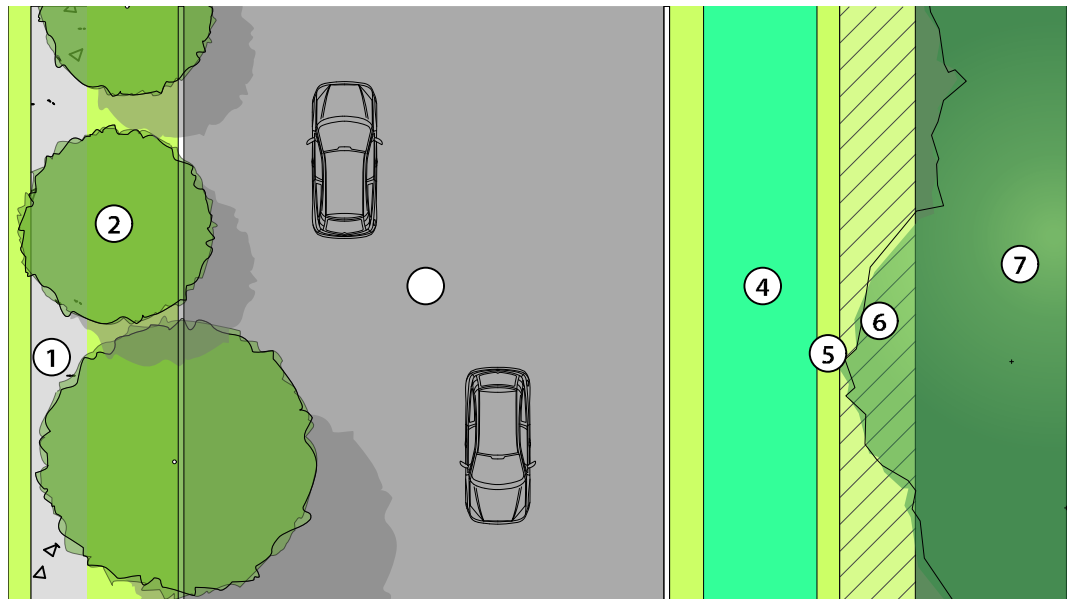
CONCRETE FOOTPATH

NOTES

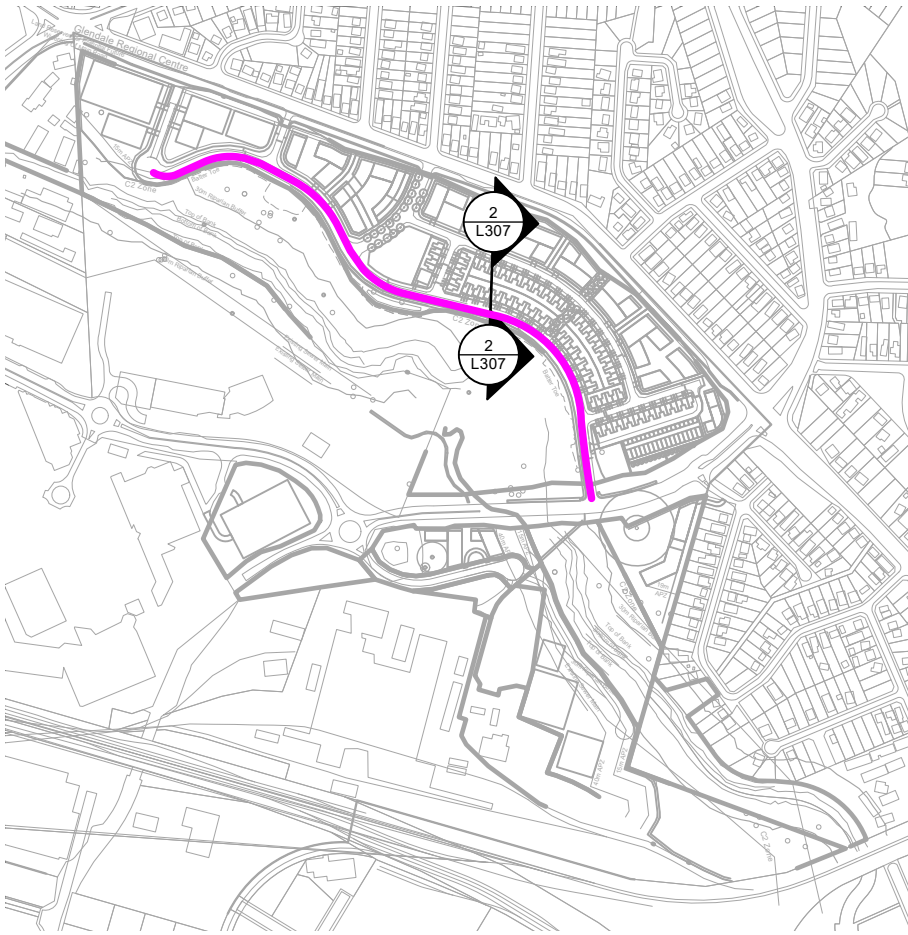
1. Activation space to encourage meeting places and urban liveliness
2. Unconnected canopy planting of native tree, endemic to Winding Creek corridor, to line entry drive and create sense of arrival
3. Allocated parking for vehicles
4. Single lane carriageway for vehicles



STREET SECTION - RIPARIAN CORRIDOR



1 RIPARIAN CORRIDOR ROAD - PLAN
Scale: 1:200

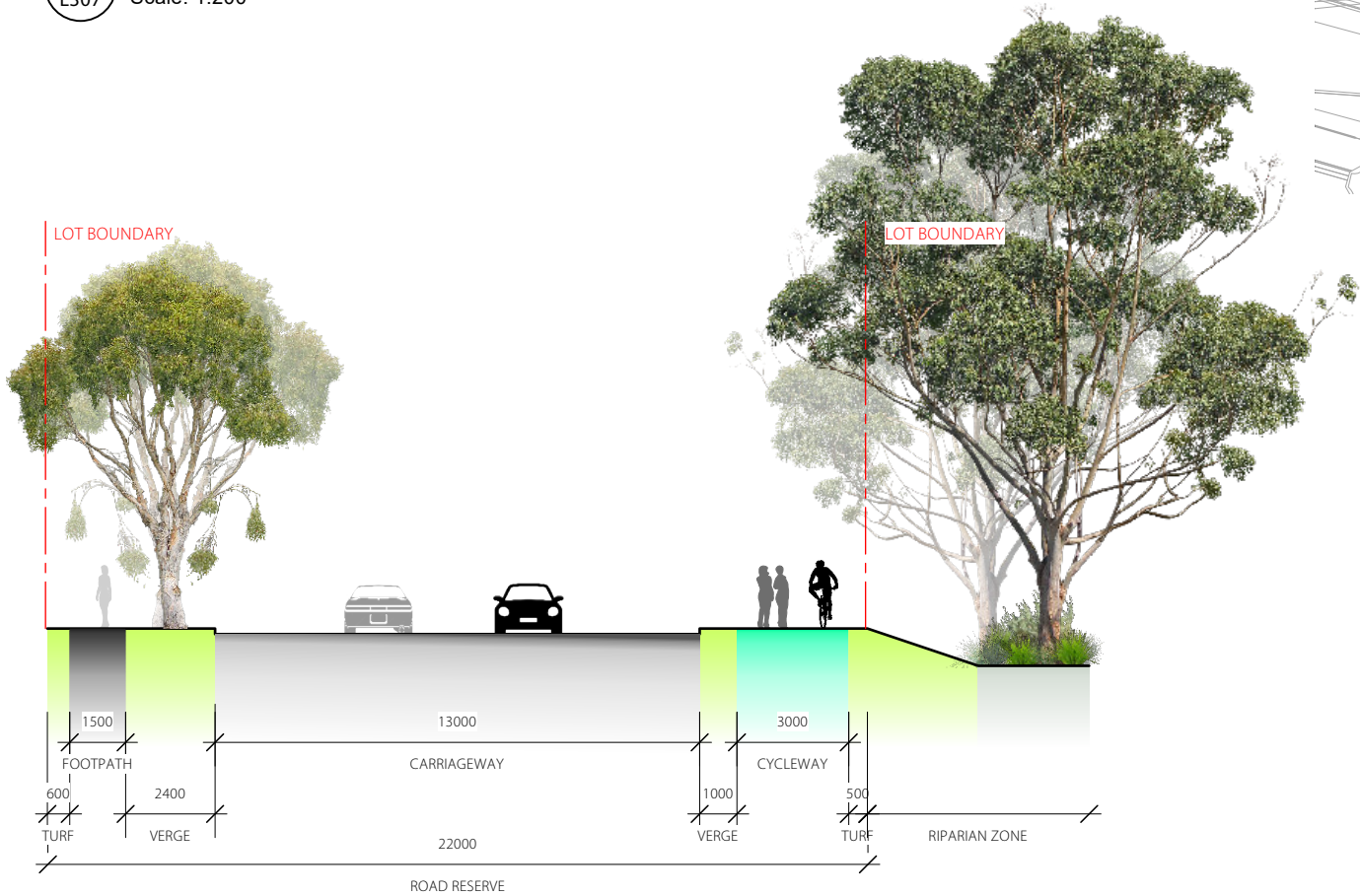


LEGEND

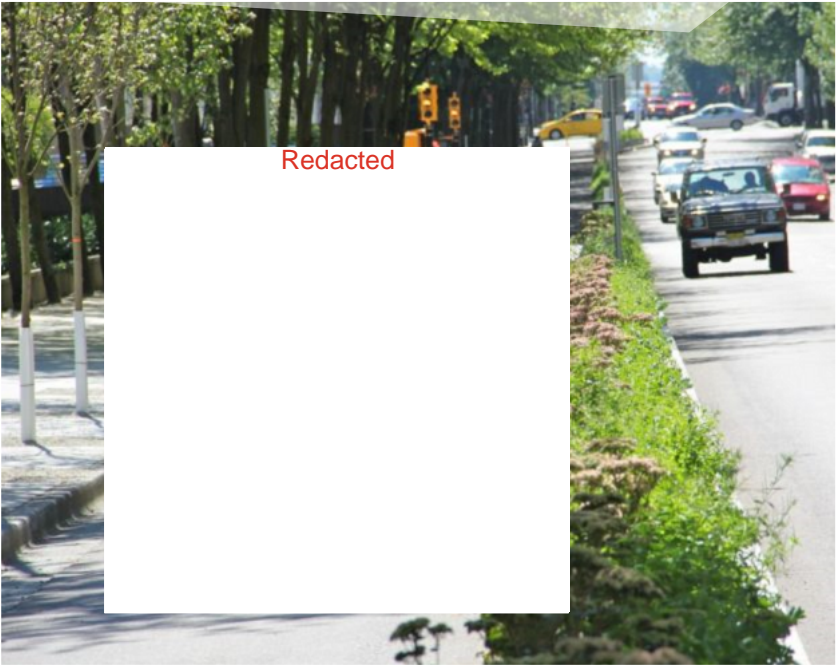
- SITE BOUNDARY
- PROPOSED TREE PLANTINGS AS SPECIFIED
- EXISTING TREE CANOPY TO BE RETAINED AND PROTECTED
- TURF AREA
- CONCRETE FOOTPATH
- 3m CYCLEWAY
- ROAD & KERB
- FLEXI ZONE
- BATTER

NOTES

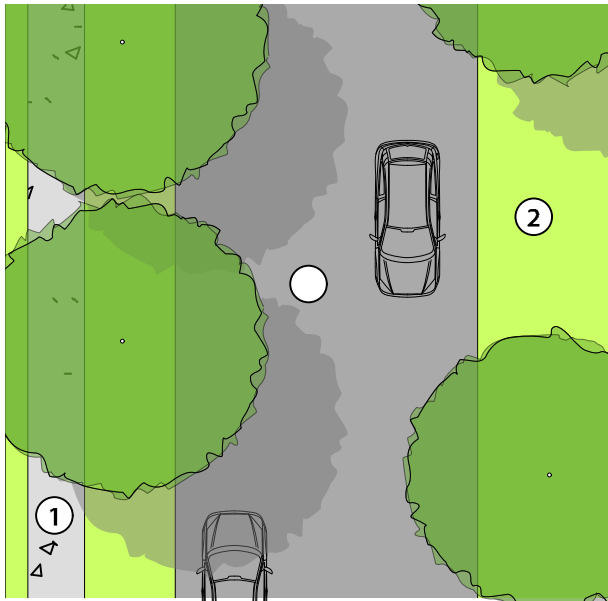
1. Pedestrian footpath
2. Trees endemic to Winding Creek corridor provide shade to parking areas
3. Single lane carriageway for vehicles
4. Designated cycleway
5. Turf buffer strip to batter edge
6. Turf batter to riparian edge to satisfy APZ requirements
7. Riparian and C2 Zone with existing vegetation to be retained and protected



2 RIPARIAN CORRIDOR ROAD - SECTION
Scale: 1:200



STREET SECTION - TYPICAL INTERNAL



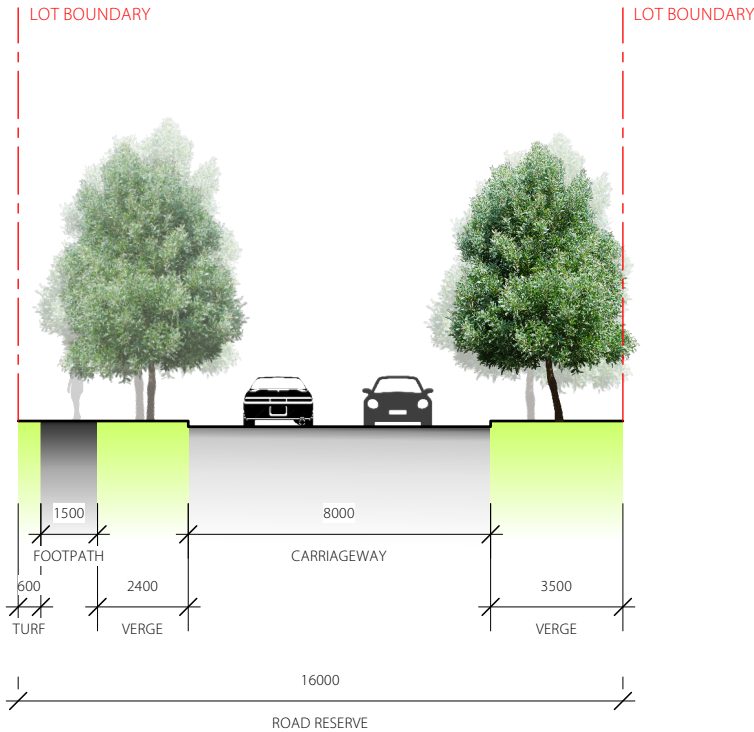
4 TYPICAL INTERNAL ROAD - PLAN
L308 Scale: 1:200

LEGEND

- SITE BOUNDARY
- PROPOSED TREE PLANTINGS AS SPECIFIED
- TURF AREA
- CONCRETE FOOTPATH

NOTES

1. Footpath for pedestrians
2. Turf to verge with unconnected canopy trees above
3. Single lane carriageway for vehicles



5 TYPICAL INTERNAL ROAD - SECTION
L308 Scale: 1:200



CONNECTION TO COUNTRY



LEGEND

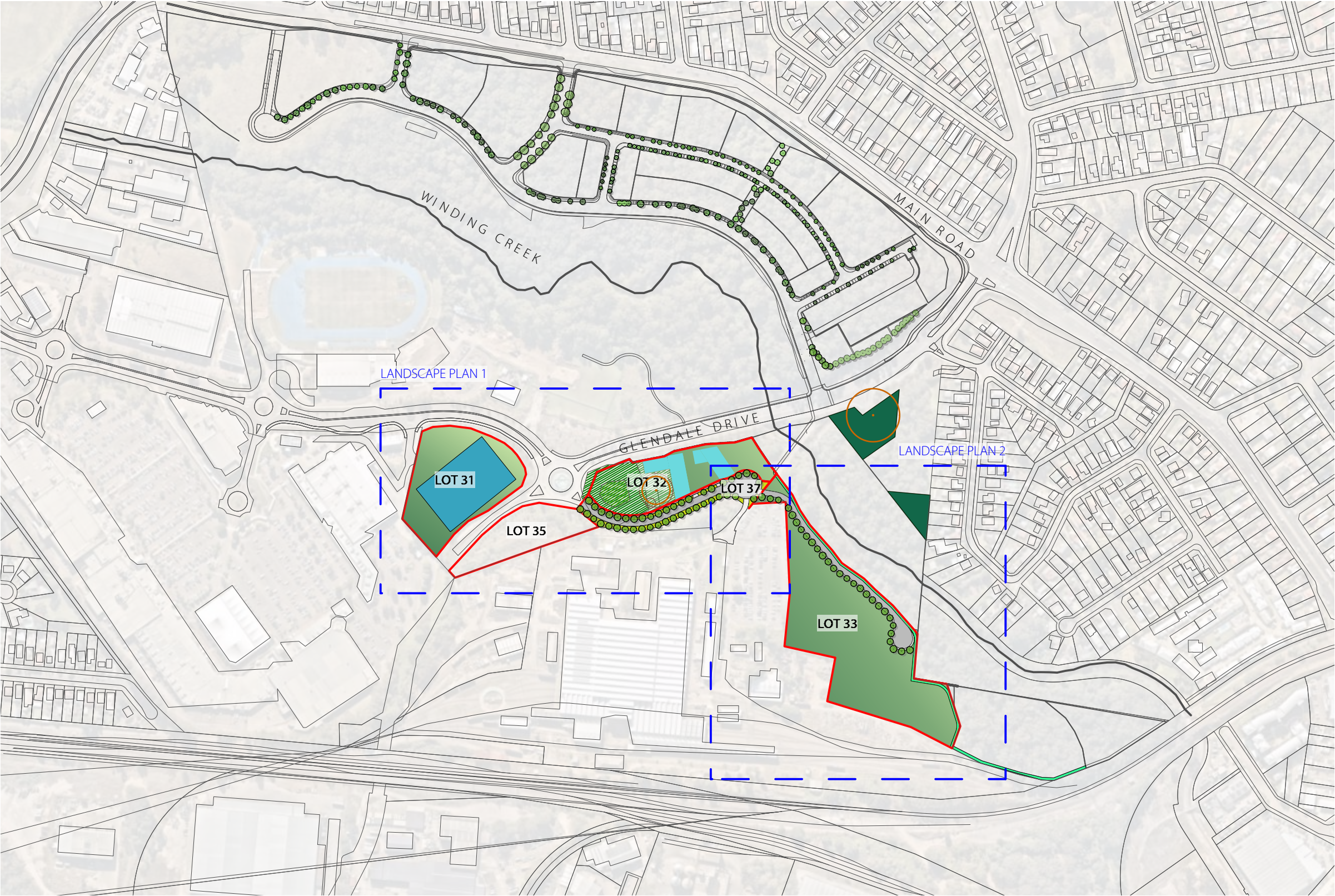
- OPPORTUNITY FOR CONNECTION TO COUNTRY INTERPRETATION
- OPPORTUNITY FOR CONNECTION TO COUNTRY-INSPIRED MEETING POINT/REST AREA

NOTES

1. Cycleway presents an opportunity to convey the significance of the site as a stepping stone to the greater area to first nations people, birds and bats and the opportunity to tell the story of the site as a conveyor of connectivity
2. Opportunity for a sculptural element on the edge of the riparian corridor to interpret connectivity, movement and flow
3. Literal representation of flora and fauna species in ground plane
4. Places to site (camp) and observe with surrounding endemic plant palette
5. Materiality of meeting point furniture and surfacing to incorporate biophilic design initiatives and invite an all-sensory experience
6. Furniture that incorporates the abstraction of the Winding Creek line, to encourage user connection to movement and water, specific to site.
7. Potential for custom, laser cut corten steel, illuminated, wayfinding bollards. Tangible, feature object located at each meeting point. Opportunity for internal lighting to create interesting shadows to cycleway edge at night.



STAGE 1 - PHASE 2 SUBDIVISION



LEGEND

- SITE BOUNDARY
- PROPOSED TREE PLANTINGS AS SPECIFIED
- TURF AREA
- COVER CROP
- FUTURE DEVELOPMENT LOT
- RESTABLISHMENT OF NATIVE VEGETATION
- SIGNIFICANT TREES TO BE PROTECTED AND RETAINED

LANDSCAPE PLAN 1



LEGEND

- SITE BOUNDARY
- PROPOSED TREE PLANTINGS AS SPECIFIED
- TURF AREA
- COVER CROP
- FOOTPATH
- FUTURE DEVELOPMENT LOT

NOTES

1. Street tree planting of *Callistemon salignus*, Willow Bottlebrush at 10m centres.
2. Cover crop species to be coordinated with ecologist to achieve correct rehabilitation outcomes.
3. 1.5m wide footpath
4. Existing paths to connect proposed shareway and cycle paths
5. Existing street trees in poor conditions. To be removed and replaced.
6. Make good existing landscaping to kerb at Lots 31 and 35 as required after works.

COVER CROP SPECIES TO BE COORDINATED WITH AND SELECTED BY THE ECOLOGIST TO ACHIEVE THE INTENDED ENVIRONMENTAL OUTCOMES.

PLANT SCHEDULE - STREET TREES

ID	Botanical Name	Common Name	Scheduled Size
CalSal	<i>Callistemon Salignus</i>	Willow Bottlebrush	10.0 x 3.0

* PCT 1619 SMOOTH BARKED APPLE OPEN FOREST COASTAL LOWLANDS
^ PCT1718 SWAMP MAHOGANY FOREST - COASTAL LOWLANDS



Callistemon salignus - Willow Bottlebrush



Existing tree removal based on aerial image & site visit. Remove existing street trees in poor condition and replace.

LEGEND

- ESTIMATED EXISTING TREES FOR REMOVAL
- EXISTING STREET TREES - POOR CONDITION (APPROX 1M²)
- 6M SETBACK FROM KERB

EXISTING TREES FOR REMOVAL = approx 200m²
EXISTING STREET TREES FOR REMOVAL = approx 67m²



Age Group	Percentage
18-24	10%
25-34	15%
35-44	20%
45-54	25%
55-64	20%
65-74	15%
75+	10%



Age Group	Percentage
18-24	10%
25-34	15%
35-44	20%
45-54	25%
55-64	20%
65-74	15%
75+	10%



Age Group	Percentage
18-24	10%
25-34	15%
35-44	20%
45-54	25%
55-64	20%
65-74	15%
75+	10%

Age Group	Percentage
18-24	10%
25-34	15%
35-44	20%
45-54	25%
55-64	20%
65-74	15%
75+	10%

-
- | Age Group | Percentage |
|-----------|------------|
| 18-24 | 10% |
| 25-34 | 15% |
| 35-44 | 20% |
| 45-54 | 25% |
| 55-64 | 20% |
| 65-74 | 15% |
| 75+ | 10% |

